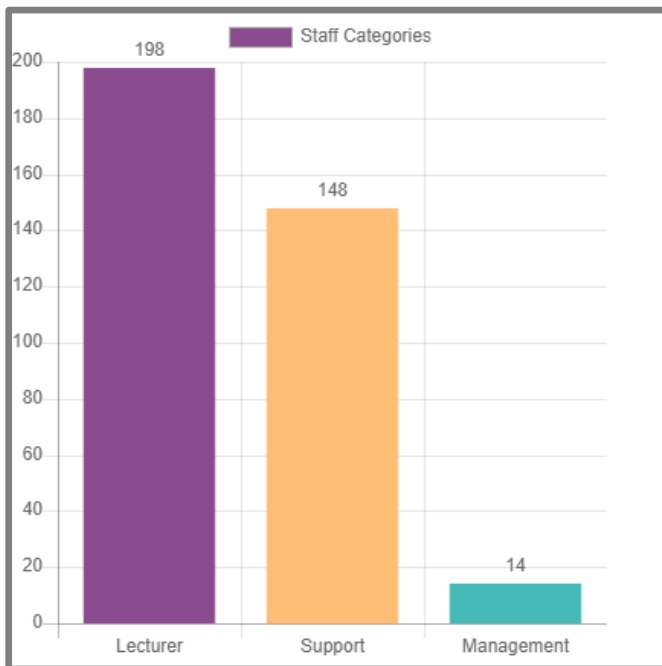
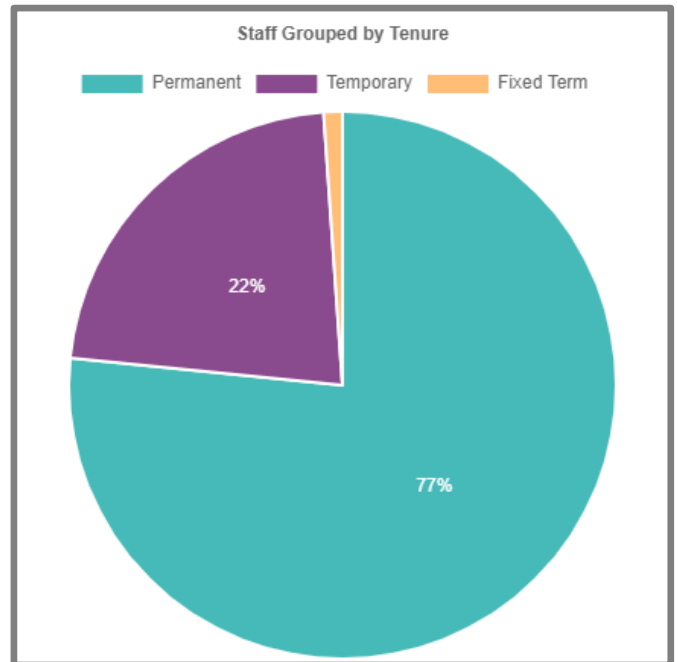


As at 2<sup>nd</sup> September 2019 the headcount within the College was 360. This is an increase in headcount of 4 staff from the report dated 2<sup>nd</sup> May 2019. Support staff increased by 3 and lecturing staff by 1.

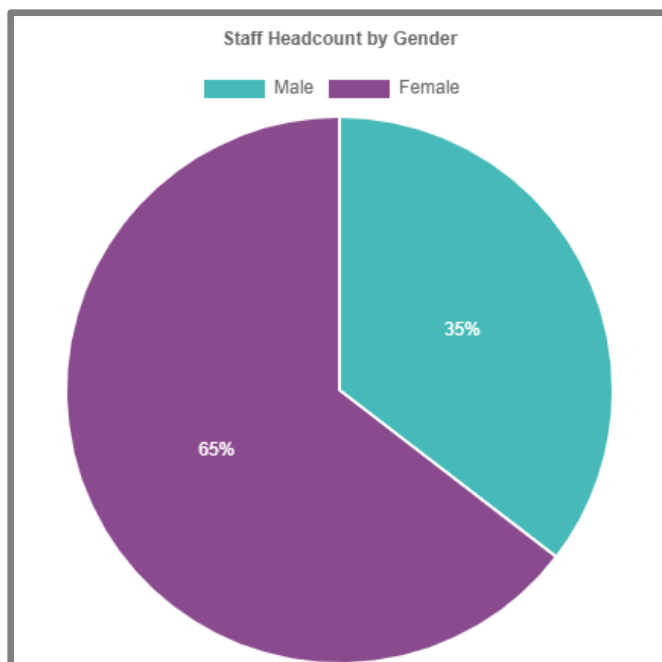
**Headcount**



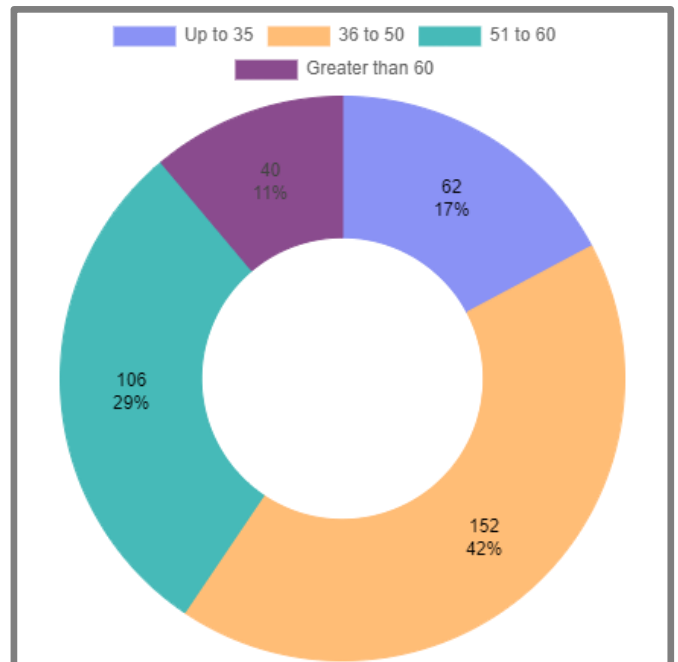
**Contractual Status**



**Gender**



**Age**



### Staff Headcount by Gender

